

# Lacté

The Milk Masters



Rechargeable  
Electric  
Breastpump

## Duet Omnia



Register your warranty online at

[www.go-lacte.com](http://www.go-lacte.com)

**GMTA Asia Sdn Bhd**

12, Jalan TK2/1C, Taman Kinrara, Seksyen 2,  
47100 Puchong, Selangor, Malaysia  
Tel: +603-8080 5262 Email: [info@gmta.asia](mailto:info@gmta.asia)

[www.gmta.asia](http://www.gmta.asia)



All parts of Lacté are BPA free



# Congratulations!

Thank you for choosing Lacté Duet Omnia Rechargeable Electric Breastpump. It has been known that breastmilk is the best natural food for your baby. With our collaboration with the breastfeeding experts and research with the lovely breastfeeding mothers who are determine to give the best to their babies, just like you, Lacté fulfils the breastfeeding mothers needs where the circumstances do not make breastfeeding possible. Milking made easy.

Lacté Duet Omnia Rechargeable Electric Breastpump - Unrivalled features at its price point

- Built-in with High Capacity Rechargeable Battery, up to 8 cycles at single full charge
- 2<sup>nd</sup> Gen Soft Breast Shield with only 4-piece assembly
- Soft Breast Shield moves along to the pumping rhythm which mimics baby's natural suckling stimulation, for maximum efficiency and comfort
- 2 phase Expression - Stimulation Phase & Expression Phase
- 9 Steps Suction Control
- Compact & light weight for maximum portability
- Silent Operation
- Touch Control

## **Intended use**

Lacté Duet Omnia Rechargeable Electric Breastpump is used to express milk from the breasts of lactating women. The Breastpump may be used to relieve engorgement, a painful condition whereby the breasts are overfull, possibly preventing a proper latch by the infant. A Breastpump may also be used in the event if an infant does not latch properly for direct breast-feeding a the mother still desires the benefits of breast milk.

# Table of contents

Congratulations	i
Intended Use	
Important safety information	1
Product description	2
Preparing the pump	3
Expression	5
Storing and Thawing Breastmilk	6
Cleaning	7
Troubleshooting	8
Technical Data	9
Warranty	9

# Important safety information

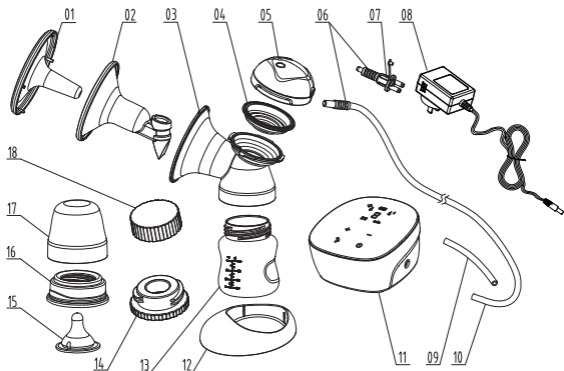
Failure to follow these instructions/ safety information can lead to danger from the device.

- Unplug the AC adapter from wall socket outlet when the pump is not in use
- Do not leave Duet Omnia Rechargeable Electric Breastpump unattended when plugged into a power source
- Keep the device dry and do not immerse in water
- Do not reach for an electrical device if it has fallen into water. Unplug immediately.
- Repairs must be conducted by authorised service agencies

## Warning

- This is a single user product. Use by more than one person may present a health risk.
- Supervision is required when the Duet Omnia Rechargeable Electric Breast-pump is used in the vicinity of children.
- Use the Duet Omnia Rechargeable Electric Breastpump only for its intended use as described in this manual.
- Do not use the Duet Omnia Rechargeable Electric Breastpump while sleeping or overly drowsy.
- Do not operate the Duet Omnia Rechargeable Electric Breastpump if it is physically damaged or abused.
- Do not place the Duet Omnia Rechargeable Electric Breastpump near any appliances generating a strong magnetic field.
- Do not place the Duet Omnia Rechargeable Electric Breastpump under direct sunlight.

## Product description



01 Dust Cover	x2	10 Main Tubing	x1
02 Silicone Breast Shield	x2	11 Main Pump Unit	x1
03 Main Breast Shield Body	x2	12 Bottle Stand	x2
04 Diaphragm	x2	13 Wide Neck Bottle	x2
05 Cap	x2	14 Bottle Adaptor	x2
06 Tubing Connector	x2	15 Nipple Teat	x2
07 Y-connector	x1	16 Bottle Ring	x2
08 Power Adaptor	x1	17 Bottle Cap	x2
09 Split Tubing	x2	18 Bottle Lid	x2

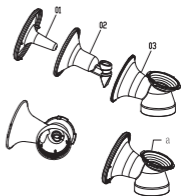
## Preparing the Pump

### Warning

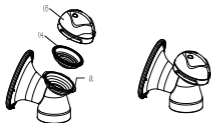
The electric breast pump comes pre-assembled, however you need to re-assemble it after each cleaning. Before assembling, the parts which come in contact with breast milk directly, such as milk bottle, silicone breast shield, breast shield body, diaphragm, bottle lid, disc collar(if use standard bottle) must be cleaned and sterilized before each use.

### Assembling Expression Collection Kit

Insert the breast shield (02) to the breast shield body (03). You will now have a complete Expression Collection Kit (a). ( NOTE : Please remove the dust cover when start pumping .)



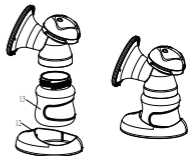
### Assembling the Diaphragm



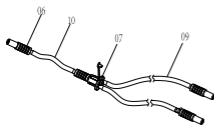
Insert the diaphragm(04) on the top portion of the Expression Collection Kit ( a ). Screw the cap(05) tightly to prevent air leak as illustrated.

### Assembling the Bottle and Bottle Stand

Assemble the assembled breast shield body onto the bottle (13). Affix the assembled collection kit to the bottle stand (12).



## Connect the Tubing Connector Set



Connect one end of the Main Tubing (10) to the single opening of the Y-Connector (07). Connect one Tubing Connector (06) to the other end of the Main Tubing (10) as illustrated below. There are 2 Split Tubings (09) with Tubing Connectors (06) attached on each ends. Connect the ends (without connectors) to the 2 Y-Connector (07) openings as illustrated.

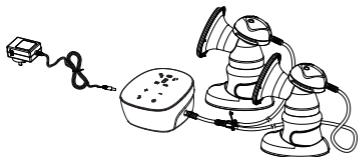
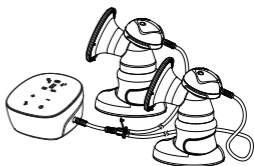
### NOTE:

1. Make sure the tubing set is assembled properly.
2. When one of the Split Tubing (09) is removed and one side is plugged, it becomes single pumping.

## Connecting Expression Collection Kit and Pump Unit

### 1. Connecting Tubing

Connect one end of the Tubing to Expression collection Kit and the other end to the Pump Unit as illustrated. Make sure both ends are connected tightly, otherwise suction may be affected.

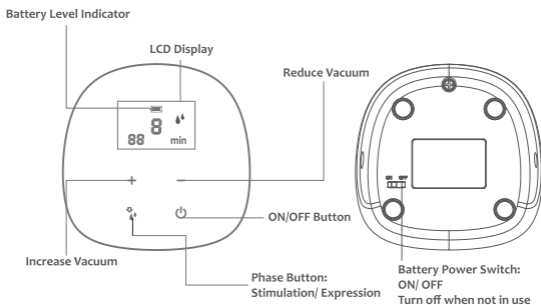


### 2. Connecting to Power Adapter

Plug the AC Adapter (08) into the socket outlet. Attach the Power Cord to Pump Unit (11) as illustrated.

# Expression

## Control Panel Description



- Place the breastshield on your breast so that your nipple is properly centred in the tunnel.
- While the Battery Power switch of the main Pump Unit is switched to On position or the main Pump Unit connected to power source, press the On/Off Button to switch on. The 30 minutes timer will start and the pump will begin with the Simulation Phase at Level 1 vacuum on both Left and Right breasts simultaneously for 2 minutes before entering into the Expression Phase at Level 3 vacuum (factory default) .
- If your milk starts to flow earlier, Press the Phase button to toggle between Stimulation and Expression Phase. Make sure the milk is flowing into the bottle properly.
- Press the Phase button will toggle between Stimulation and Expression Phase.
- The vacuum can be adjusted in every phase to your desired strength. Comfort vacuum: Use the + button to increase the vacuum until it is slightly unpleasant. Then press – button to reduce minimally.
- Press the Function Button to select the pump to operate on the Left, Right or Duet.



- In Expression Phase, the vacuum at both left and right of Solo Elite Rechargeable Electric Breastpump can be adjusted individually at desired level. While the pump is operating at the Left press + and – button to set the desired vacuum level for the Left. Repeat the same

## Built-In Battery

Make sure that you charge the built-in battery prior to first use. The built-in battery is not removable. Connect the Pump Unit to the AC adaptor to charge. When the battery is full, the pump unit will turn off automatically.

The battery can be charged while in Operation mode or Standby mode. At full charged, the pump can operate up to 8 complete cycles, depending on your setting. When the battery level is at critical low level, the battery indicator on the LCD will flash continuously, the pump unit will then shut down. To save the battery life, turn the Battery Power Switch to Off position if the pump is not in use.

## Storing and Thawing Breastmilk

You should store and thaw your breastmilk correctly. This is the only way you can be sure that all the important nutrients are preserved and bacterial contamination is minimised.

Guidelines for storing / thawing breastmilk

Lacte recommends using the following guidelines for storing and thawing breastmilk. For Healthy Term Babies.

	Freshly expressed breastmilk	Thawed breastmilk (previously frozen)
Room temperature	Do not store at room temperature	Do not store
Refrigerator	3 - 5 days at approx. 4°C	10 hours
Refrigerator freezer compartment	6 months at approx. -16°C	Do not refreeze after thawing!
Freezer	12 months at approx. -18°C	Do not refreeze after thawing!

### Tips for freezing/thawing breastmilk:

- Never fill bottles/bags more than full to allow space for possible expansion.

- Label the bottle/bag with the date you expressed the milk.
- Do not store breastmilk in the refrigerator door. Store it in the lower back area of the refrigerator, where the temperature is coolest.
- Thaw frozen breastmilk in the refrigerator overnight or hold the bottle or bag under running warm water (max. 37° C).
- Shake the bottle or bag gently to blend any fat that has separated.
- Do not thaw frozen breastmilk in a microwave oven or in a pan of boiling water (danger of burning).

## Cleaning

Before using your Lacte Solo Elite Rechargeable Electric Breastpump, disassemble, wash and sterilise all parts of the Expression Collection Combo kit.

- Do NOT sterilise tubing or tubing adapter
- Completely air-dry or towel-dry before reassembly for next use.

Partially dry components may affect the operation of your Electric Breastpump. Please ensure that all parts are completely dry before use.

### Before Each Use:

- Wash your hands thoroughly with soap and warm water before handling the Expression Collection Combo Kit, the Electric Breastpump or any other attachments.
- Make sure the Expression Collection Combo Kit is cleaned, sterilised and dried.
- Ensure the tubing is free from any liquid. Do NOT operate your Lacté Solo Electric Breastpump if any liquid is visible in the tubing. (See Tubing Cleaning Instructions on page 8.)

### General Cleaning Instructions:

- Set aside the tubing and tubing connector. Under the normal working conditions of the pump, the diaphragm would prevent the back-flow of milk. Therefore, these items do not need to be washed. In case of finding any liquid or liquid vapor inside the tubing, follow the Tubing Cleaning Instruction carefully before use.
- All parts of the Expression Collection Combo Kit may be cleaned in the upper compartment of your dishwasher or hand washed with dish soap in hot water.

- Do NOT use solvents or abrasives.
- Rinse with hot, clean water.
- To clean the Electric Pump Base, wipe the Base with a damp cloth, using only water or water mixed with a mild soap

### **Tubing Cleaning Instructions:**

- Wipe the outside of the tubing with a clean, damp cloth. Avoid getting water or other fluids inside the tubing.
- If liquids are found inside tubing, rinse the tubing with clean hot water. Hang to AIR DRY COMPLETELY BEFORE USING. Do NOT insert any object into tubing.

Note: Before each use, visually inspect the individual components for cracks, chips, tears, discoloration or deterioration; as they may affect the efficiency of the Lacté Solo Elite Rechargeable Electric Breastpump. In the event that damage to the device is observed, please discontinue use until the parts have been replaced.

## Troubleshooting

### **Weak suction or no suction**

- All parts must be completely dry and not damp
- Make sure that the silicone breast shield on each side fits tightly onto the breast shield body. Any part that is not snugly attached will cause poor suction
- Make sure that the silicone diaphragm is properly attached onto the breast shield body
- Check all connections if they are properly attached at all connection points
- Ensure the breast shield forms a complete seal around the breast
- Any leak along the system will cause weak suction or no suction at all
- Replace the worn out parts such as silicone breast shield, diaphragm, connector

### **The Pump is not powering on**

- Charge the battery
- Connect the pump to the power adaptor and ensure the wall socket outlet is switched on
- Contact your Lacte dealer, Service Center or the store where you bought the pump

## Technical Data

Model	DP03
Battery	Li-ion 7.4V ~ 1750mAh
Power Input	AC 100V-240V ~50Hz -60Hz
Power Output	DC 10V / 1.5A
Power Rating	15W
Stimulation Speed	70-100 T/min
Stimulation Pressure	-0.012 MPa (Max, Double Pump), 9 Steps
Expression Speed	24-70 T/min
Expression Pressure	-0.026 MPa (Max, Double Pump), 9 Steps
Noise	≤60 dB(A)

## Warranty

The Lacté Duet Omnia Rechargeable Electric Breastpump ("Product") is warranted to the original user — whether institutional or individual ("First User"). — only From the date of the First User's purchase of this product, GMTA Asia Sdn. Bhd. ("GMTA") warrants the Product to the First User against defects in material or workmanship for a period of one year for the pump mechanism.

GMTA's sole obligation under this limited warranty shall be to repair or replace, at GMTA's option, any Product that is determined to be defective by GMTA and determined to be covered by this express limited warranty. Repair or replacement under this limited warranty is the sole and exclusive remedy of the First User. Proof of purchase in the form of a receipted invoice or bill of sale evidencing that the Product is within the warranty period must be presented to obtain warranty service. This limited warranty is extended by GMTA ONLY to the First User and is not assignable or transferable.

EXCEPT TO THE EXTENT PROHIBITED BY APPLICABLE LAW, ANY IMPLIED WARRANTY OF MERCHANTABILITY OR FITNESS FOR A PARTICULAR PURPOSE ON THE PRODUCT IS HEREBY DISCLAIMED. GMTA SHALL NOT BE LIABLE FOR ANY INCIDENTAL, CONSEQUENTIAL, SPECIAL OR PUNITIVE DAMAGES OF ANY KIND FOR BREACH OF THE EXPRESS LIMITED WARRANTY ON THE PRODUCT OR ANY WARRANTY IMPLIED BY OPERATION OF LAW. OTHER THAN THE EXPRESS LIMITED WARRANTY SET FORTH ABOVE, THERE ARE NO OTHER WARRANTIES THAT ACCOMPANY THIS PRODUCT AND ANY ORAL, WRITTEN OR ANY OTHER REPRESENTATION OF ANY KIND IS HEREBY DISCLAIMED.

### Non-Applicability of Warranty

In addition to any other limitations on the warranty discussed above, the warranty shall expire and be of no force or effect upon the occurrence of any of the following:

- (i) the cause of damage to the Product is due to improper handling or use.
- (ii) the Product is not properly maintained by the First User as determined by GMTA.
- (iii) non approved accessories or spare parts are used with the Product as determined by GMTA.

If any of the above occurs, GMTA shall not be responsible for damage to the Product, parts thereof or injuries arising therefrom, either directly or indirectly. The warranty terms set forth above replaces all prior warranties with respect to the purchased Product, whether in writing or otherwise.

Call your local distributor or location where you purchased the Product.